

WHAT IS DESTINATION IMAGINATION?

Destination Imagination (DI) is an educational nonprofit on a mission to inspire young people to imagine and innovate today so they can become the creative and collaborative leaders of tomorrow.



WHY SHOULD YOUR CHILD PARTICIPATE?

The world needs a generation of innovators in order to solve our biggest challenges. It requires individuals to be unafraid to push limits, change systems, work together, and forge new paths. Destination Imagination equips participants with the skills necessary to tackle the future head-on.

WHAT IS THE CHALLENGE EXPERIENCE?

Our Challenge Experience program is a team-based, creative project competition. Teams of students from pre-K through university learn to use the creative process to solve one of our seven annual Challenges.

WHO CAN PARTICIPATE?

A DI team is a group of students of between 2 and 7 members that work together to develop a solution to one of our Team Challenges. The Team Manager is an adult (often a parent or teacher) helps keep the team on track, but does not assist or interfere with the team's solution.



WHEN DOES THE PROGRAM START?

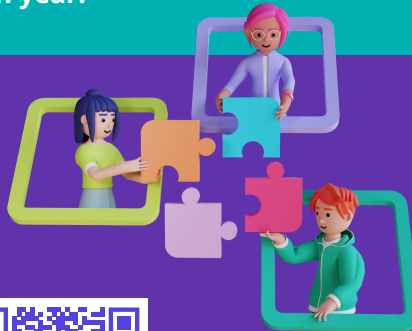
Teams form and begin meeting between August and January. They typically spend 2-6 months developing their Team Challenge solutions and practicing Instant Challenges. Most local tournaments take place between February and April. For teams that qualify for Global Finals, their season may extend into May of each year.

HOW DO I JOIN A TEAM?

Speak to the person who gave you this flyer.

HOW DO I START A TEAM?

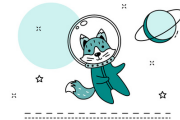
Visit our Start a Team page by scanning the QR code  or visit tinyurl.com/StartDI.



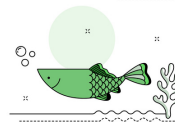
2024-25 CHALLENGES



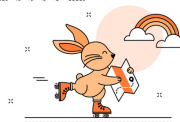
BREAKING POINT
technical



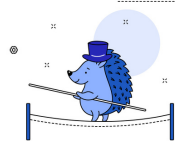
WORLDS BEYOND
scientific



LESS IS MORE
fine arts



ARE WE THERE YET?
improvisational



HIGH-WIRE ACT
engineering



THIS OR THAT
service learning



WEATHER TOGETHER
early learning



**SCAN & VIEW THE
CHALLENGE PREVIEWS**